


**6** This is the main A4025 and is a busy road so make sure the road is clear before crossing. Go straight across onto Lincomb Lane.

**7** Follow this lovely lane for about 2 miles. Don't turn off anywhere but go past Lincomb and Winnall and continue until you see a sign on the right for the entrance to "Clack's Farm". Turn left here and head uphill to a crossroads.

**8** At the crossroads, turn left (*signposted Lineholt and Hartlebury*) then cycle past the few houses at Lineholt and continue along Bishops Wood Lane. This will eventually take you past Omersley Golf Club on the left-hand side.

**9** About 1/3 mile after this, look out for a left turn and take this. This leads downhill back to Lincomb. This is a steep downhill so test your brakes and TAKE CARE 

**10** At the bottom of the hill you will re-join Lincomb Lane. Turn right along Lincomb Lane.

**11** Retrace your route across the A4025 (**caution – busy road**) then along Chadwick Lane all the way to Rectory Lane Hartlebury.

You can divert left here to Hartlebury Castle where there is a café (closed Mondays) and Museum. Tel. 01299 250416 [www.hartleburycastle.com](http://www.hartleburycastle.com)

**12** Turn right at the 'T' Junction with Rectory Lane (take care as the road can be busy). Follow Rectory Lane round the corner at the White Hart PH, then turn right again into Inn Lane.

**13** At the end of Inn Lane turn left then immediately right to re-trace your route back to the Tap House PH at Hartlebury Station to complete a very pleasant rural ride.

Refreshments are available at the Tap House which is open daily. Tel. 01299 253275 [www.thetaphousehartlebury.co.uk](http://www.thetaphousehartlebury.co.uk)



This leaflet is one of a series of short leisure cycling routes within the Wyre Forest district. GPS files and a PDF of each route can be downloaded from [www.wyreforestcycling.co.uk](http://www.wyreforestcycling.co.uk)

For information on the **National Cycle Network** please visit [www.sustrans.org.uk/national-cycle-network](http://www.sustrans.org.uk/national-cycle-network)

This route follows NCN45 between Hartlebury Station and Hartlebury Castle

#### Businesses available on this route:

**The Tap House Pub & Restaurant**, Hartlebury Station. [www.thetaphousehartlebury.co.uk](http://www.thetaphousehartlebury.co.uk)  
Tel: 01299 253275

**Hayley's Kitchen**, Hartlebury Castle  
Open: 10.00-5.00 Tuesday – Sunday (closed Monday) [www.hartleburycastle.com](http://www.hartleburycastle.com)  
Tel: 01299 250416

This leaflet, and others in the series, have been produced by the Wyre Forest Cycle Forum with funding provided by Wyre Forest District Council. Find out more here or scan the QR code: [www.wyreforestdc.gov.uk/cycling](http://www.wyreforestdc.gov.uk/cycling)



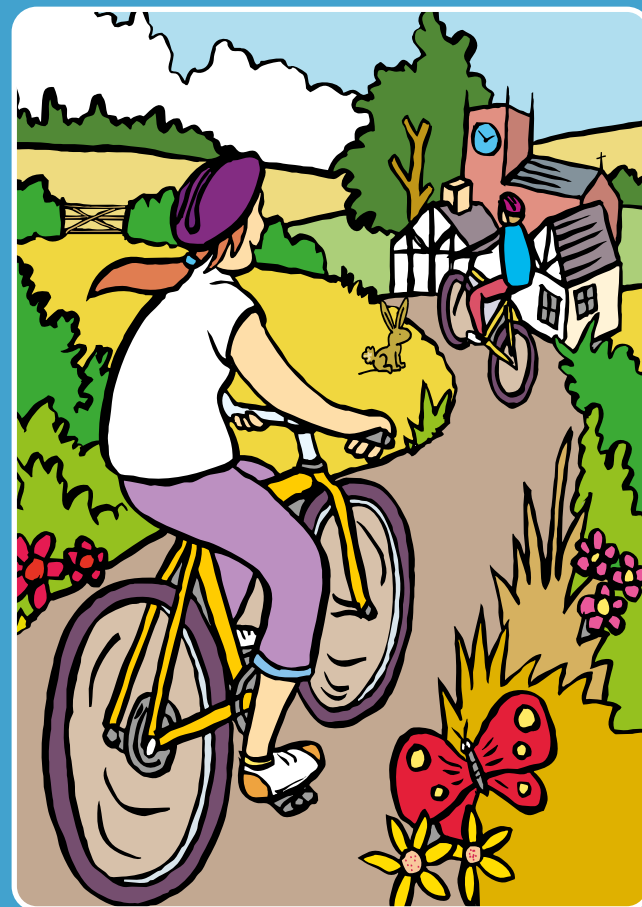
**Wyre Forest**  
District Council

Artwork by [www.macreative.co.uk](http://www.macreative.co.uk)



**Wyre Forest**  
Cycle Forum

## Hartlebury Station to Lincomb Circular



# Hartlebury Station to Lincomb Circular

**Distance:** 9.7 miles / 15.6 kilometres

**Description:** A relatively easy bike ride with a few hills and some lovely views. All on quiet rural roads with one major road to cross over. Great for any fitness level.

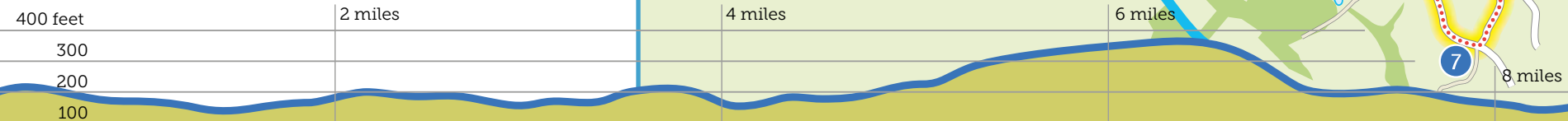
**Start Point:** Hartlebury Station, Hartlebury, Kidderminster DY11 7YJ

If coming by car (rather than train) please park in the **OVERFLOW** Car Park of the Tap House Pub which is in the former railway station buildings.

**Website:** [www.thetaphousehartlebury.co.uk](http://www.thetaphousehartlebury.co.uk)

- 1 From the Tap House car park, turn left (away from the railway) and cycle along Station Road, under the A449, to a staggered crossroads.
- 2 Turn left and immediately right (by the Post Office) on to Inn Lane. This road is narrow in parts so take care.
- 3 When you reach the 'T' Junction with Rectory Lane (B4193) turn left.
- 4 Follow the main road round the corner at the White Hart PH and take the next left onto Chadwick Lane.
- 5 Cycle along Chadwick Lane and fork right at the junction with Parsons Lane. Continue for another mile to a crossroads.

## ROUTE PROFILE



## 2 Hartlebury Station to Lincomb Circular

